

## 5Kb DNA Marker

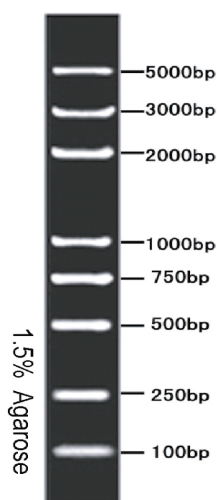
**Catalog# GF3005**

Catalog No.	Volume	Loads
<b>GF3005-50</b>	<b>250 <math>\mu</math>l</b>	<b>50</b>
<b>GF3005-100</b>	<b>500 <math>\mu</math>l</b>	<b>100</b>
<b>GF3005-200</b>	<b>1000 <math>\mu</math>l</b>	<b>200</b>

**Description:** The Gene-Foci 5Kb DNA marker contains purified PCR products and enzyme digested double stranded DNA, equilibrated with TE buffer (pH 8.0), and with reference loading dye added. The 5Kb DNA marker includes DNA fragments ranging from 100-5,000 base pairs. The 3,000 base pair band has increased intensity to serve as a reference point.

**Concentration:** 100 ng/ $\mu$ l. If load 5  $\mu$ l per lane, the approximate concentration of the 750 bp band is 100 ng, and the approximate concentration of other bands is 50 ng/band.

**Storage:** Stable at room temperature for 6 months, and 2 years at -20°C.



5Kb DNA marker visualized by ethidium bromide staining on a 1.5% TAE agarose gel.

**For Research Use Only**